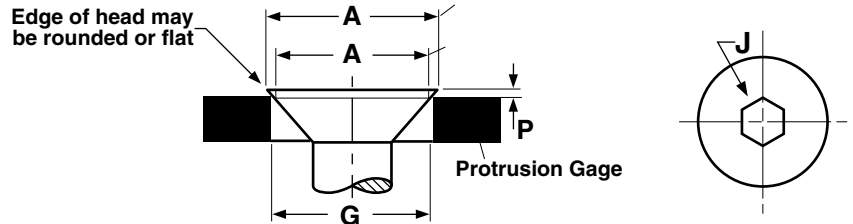
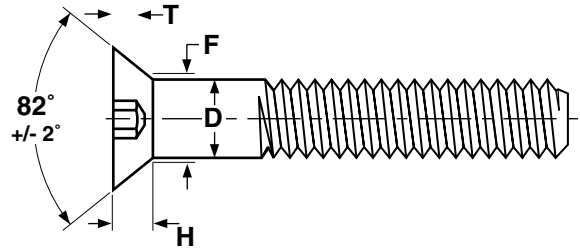


Socket Products

Flat Head Socket
Cap Screws



Nominal Size	D		A		H	G		P		J	T	F	Tensile Strength, Lbs. Min		Single Shear Strength of Body	Recommended Seating Torques, in./lbs.	
	Max	Min	Theoretical Sharp Max	Abs. Min	Ref	Max	Min	Max	Min	Nom	Min	Max	UNRC	UNRF	lbs., Min	Coarse Thread	Fine Thread
4	0.1120	0.1075	0.255	0.218	0.083	0.172	0.171	0.047	0.037	1/16	0.055	0.136	900	-	940	8.	-
5	0.1250	0.1202	0.281	0.240	0.090	0.196	0.195	0.048	0.037	5/64	0.061	0.153	1,185	-	1,180	12.	-
6	0.1380	0.1329	0.307	0.263	0.097	0.220	0.219	0.049	0.037	5/64	0.066	0.168	1,350	-	1,440	15.	-
8	0.1640	0.1585	0.359	0.311	0.112	0.267	0.266	0.051	0.039	3/32	0.076	0.194	2,085	-	2,030	30.	-
10	0.1900	0.1840	0.411	0.359	0.127	0.313	0.312	0.054	0.041	1/8	0.087	0.220	2,610	2,610	2,720	40.	45.
1/4	0.2500	0.2435	0.531	0.480	0.161	0.424	0.423	0.059	0.046	5/32	0.111	0.280	4,750	4,750	4,710	100.	110.
5/16	0.3125	0.3053	0.656	0.600	0.198	0.539	0.538	0.063	0.050	3/16	0.135	0.343	7,800	7,800	7,360	200.	220.
3/8	0.3750	0.3678	0.781	0.720	0.234	0.653	0.652	0.069	0.056	7/32	0.159	0.405	11,600	11,600	10,600	350.	400.
7/16	0.4375	0.4294	0.844	0.781	0.234	0.690	0.689	0.084	0.071	1/4	0.159	0.468	15,900	15,900	14,400	560.	-
1/2	0.5000	0.4919	0.938	0.872	0.251	0.739	0.738	0.110	0.096	5/16	0.172	0.530	21,200	21,200	18,850	850.	1,000.
5/8	0.6250	0.6163	1.188	1.112	0.324	0.962	0.961	0.123	0.108	3/8	0.220	0.655	33,800	33,800	29,450	1,700.	-
3/4	0.7500	0.7406	1.438	1.355	0.396	1.186	1.185	0.136	0.121	1/2	0.220	0.780	50,000	50,000	42,400	3,000	-

Tolerance on Length	Nominal Screw Size	Nominal Screw Length		
		Up to 1 in., Incl.	Over 1 in. to 2-1/2 in., Incl.	Over 2-1/2 in. to 3 in., Incl.
	0 thru 3/8, Inclusive	-0.03	-0.04	-0.06
	7/16 thru 3/4, Inclusive	-0.03	-0.06	-0.08

ASME B18.3-1998,
Blue Devil®

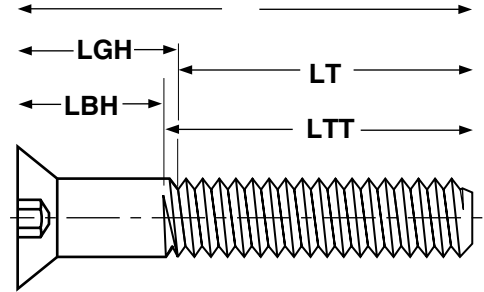
The value-added source for quality bolts, screws, nuts, washers and other industrial fasteners.

3211 West 9th Street, Trainer, PA 19061-5242 TOLL FREE: 1-800-662-7459 LOCAL: 610-485-5700 FAX: 610-485-5877

E-MAIL: sales@coburnmyers.com

Socket Products

Flat Head Socket
Cap Screws



Nominal Size	4		5		6		8		10		1/4	
LT MIN.	.750		.750		.750		.875		.875		1.000	
LTT MAX	0.99		1.00		1.05		1.19		1.27		1.50	
Nominal Length	LGH	LBH	LGH	LBH	LGH	LBH	LGH	LBH	LGH	LBH	LGH	LBH
1.25	0.50	0.38	0.50	0.38	0.50	0.34	0.38	0.22				
1.50	0.50	0.38	0.50	0.38	0.50	0.34	0.38	0.22	0.62	0.42		
1.75	1.00	0.88	1.00	0.88	1.00	0.84	0.88	0.72	0.62	0.42	0.75	0.50
2.00	1.00	0.88	1.00	0.88	1.00	0.84	0.88	0.72	1.12	0.92	0.75	0.50
2.50					1.50	1.34	1.38	1.22	1.62	1.42	1.25	1.00
3.00							1.88	1.72	2.12	1.92	1.75	1.50
3.50									2.62	2.42	2.25	2.00

Nominal Size	5/16		3/8		7/16		1/2		5/8		3/4	
LT MIN.	1.125		1.250		1.375		1.500		1.750		2.000	
LTT MAX	1.71		1.94		2.17		2.38		2.82		3.25	
Nominal Length	LGH	LBH	LGH	LBH	LGH	LBH	LGH	LBH	LGH	LBH	LGH	LBH
2.00	0.88	0.60										
2.25	0.88	0.60	1.00	0.69								
2.50	1.38	1.10	1.00	0.69	1.12	0.77	1.00	0.62				
3.00	1.88	1.60	1.50	1.19	1.62	1.27	1.00	0.62				
3.50	2.38	2.10	2.00	1.69	2.12	1.77	1.75	1.36	1.50	1.04	1.50	1.00
4.00	2.88	2.60	2.50	2.19	2.62	2.27	2.50	2.12	2.25	1.80	1.50	1.00
4.50	3.38	3.10	3.00	2.69	3.12	2.77	2.50	2.12	2.25	1.80	2.50	2.00
5.00	3.88	3.60	3.50	3.19	3.62	3.27	3.25	2.86	3.00	2.54	2.50	2.00
5.50	4.38	4.10	4.00	3.69	4.12	3.77	4.00	3.62	3.75	3.30	3.50	3.00
6.00	4.88	4.60	4.50	4.19	4.62	4.27	4.00	3.62	3.75	3.30	3.50	3.00

ASME B18.3-1998

The value-added source for quality bolts, screws, nuts, washers and other industrial fasteners.

3211 West 9th Street, Trainer, PA 19061-5242 TOLL FREE: 1-800-662-7459 LOCAL: 610-485-5700 FAX: 610-485-5877

E-MAIL: sales@coburnmyers.com